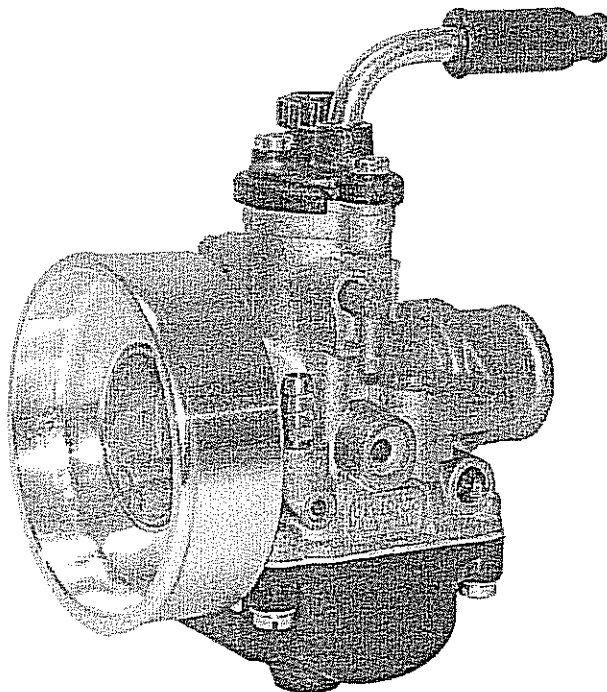


Homologationsblatt-Nr.:
Homologation No.**KM 29/07**Nachtrag-Nr.:
Extension No.**05/01 ET**Anzahl der Nachtrag-Seiten:
Number of extension pages**3****Zu Pos. 3 – Vergaser**
To Pos. 3 - CarburettorDieser Nachtrag ersetzt sämtliche Angaben (inkl. Photos) zum Vergaser
The extension replace all indications refer to the carburettor

3. **Vergaser** a) Anzahl: 1 b) Typ: Schiebervergaser/ slide carb.
Carburettor Number Type
- c) Marke und Modell: DELL'ORTO PHBG 18 BS
Mark and model
- d) Anzahl der Drosselklappen/Schieber: 1
Number of throttles/slides per carburettor
- e) Max. Durchmesser d. Gemischöffnung am Vergaserausgang: 18,0 mm
Max. diameter of flange hole of carburettor exit point
- f) Max. Durchmesser des Lufttrichters am engsten Punkt: 18,0 mm
Max. diameter of the venturi at the narrowest point

Photo G



Nachtrag gültig ab: 01.01.2011

Nachtrag-Seite: 1 von 3
Page of extension

Homologationsblatt-Nr.:
Homologation No.

KM 29/07

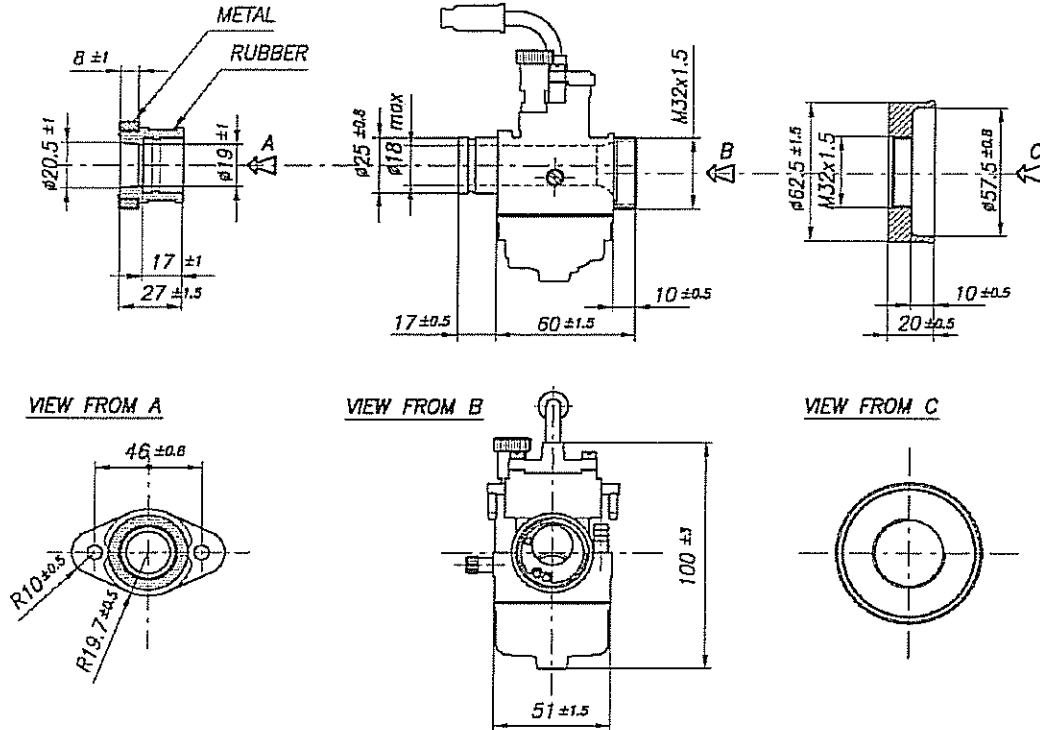
Nachtrag-Nr.:
Extension No.

05/01 ET

Anzahl der Nachtrag-Seiten:
Number of extension pages

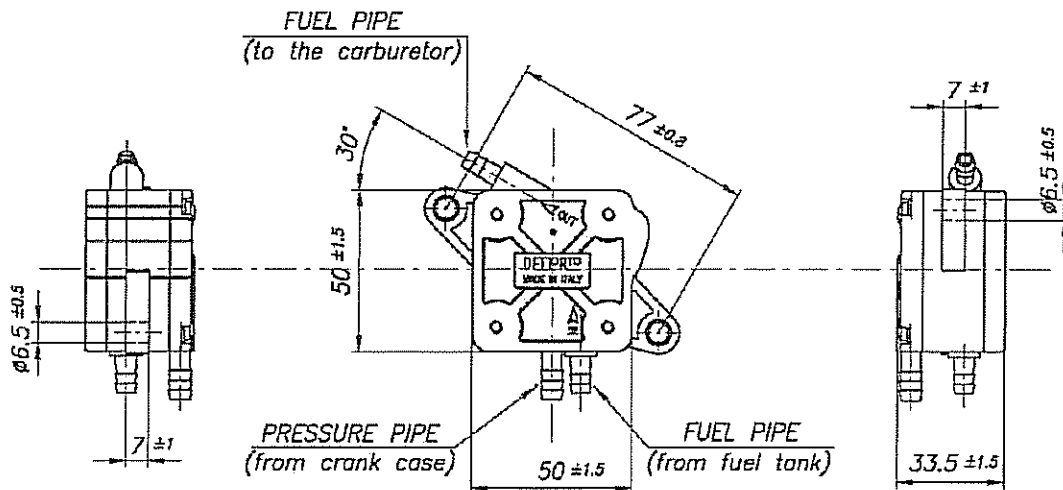
3

Gummiflansch/rubber manifold – Vergaser/carburettor PHBG 18 BS – Ansaugflansch/inlet silencer manifold



(according CSAI hom. N°64/CR/09)

Benzinpumpe – Fuel pump DELLORTO TYPE P34PB2



[Handwritten signature]



Homologationsblatt-Nr.:
Homologation No.

KM 29/07

Nachtrag-Nr.:
Extension No.

05/01 ET

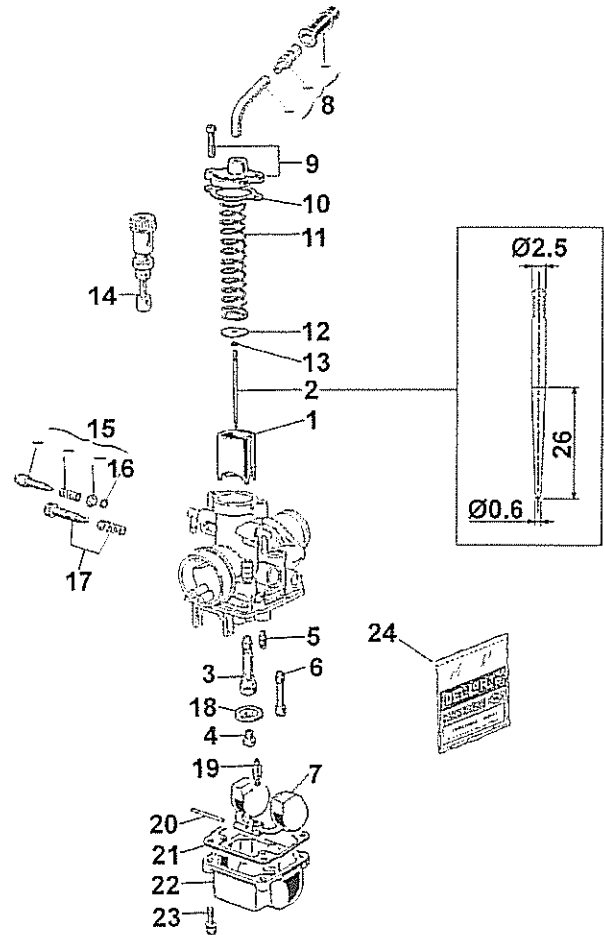
Anzahl der Nachtrag-Seiten:
Number of extension pages

3

Vergaser - Carburettor DELLORTO PHBG 18 BS

REF.	PART. N°	PART DESCRIPTION
1	9475 x 64	THROTTLE : 40
2	9595 x 08	NEEDLE : W 23
3	9511 x 28	ATOMISER : AN 266
4	1486 x 02	MAIN JET : 90/91/92/93/94/95
5	1488 x 02	IDLE JET : 55
6	9501 x 02	STARTER JET : 60
7	9450 x 80	FLOAT : 01 gr. 4
8	53036 - 78	ELBOW 90° KIT
9	53031 - 78	VALVE CHAMBER COVER KIT
10	*	GASKET COVER
11	9597 - 61	SPRING VALVE
12	14958 - 21	PLATE
13	9596 - 21	CLIP
14	9538 - 64	MANUAL STARTER DEVICE
15	53024 - 78	IDLE MIXTURE ADJUSTING SCREW KIT
16	*	IDLE MIXTURE ADJUSTMENT GASKET
17	53027 - 78	THROTTLE VALVE ADJUSTING SCREW KIT
18	9779 - 52	ANTI-SURGE WASHER
19	2838 - 05	FUEL VALVE NEEDLE
20	9506 - 22	FLOAT PIN
21	*	FLOAT CHAMBER GASKET
22	9444 - 96	FLOAT CHAMBER
23	11836 - 36	FLOAT CHAMBER SCREW
24	52526 - 77	GASKET SET

* INDICATES CONTENTS OF REPAIR KIT



Nachtrag gültig ab: 01.01.2011

Nachtrag-Seite: **3 von 3**
Page of extension

